

# Laboratory Software



## LabX Laboratory Software

Efficient Workflows

One System

Maximum Security

## LabX

## Power the Bench

METTLER TOLEDO

# LabX

## Laboratory Instrument Software

**LabX Laboratory Software connects to multiple METTLER TOLEDO lab instruments. Benefit from increased workflow efficiency, optimal security support and centralized management of one or multiple instruments, users and data.**

LabX is not just a connection to an instrument, it is a complete laboratory solution. There is no need for PCs in the laboratory, the system works remotely via the network. LabX automates all administrative work. The paperless lab is a reality. LabX makes your laboratory lean and provides highest security.



### Efficient Workflows

Simplify your daily routines both in the lab and in the office with LabX software. Secure your processes and SOPs and make sure they are properly followed by having the right information at your fingertips.

- Easy application development
- Automatic generation and recalculation of results
- Reports
- User guidance at the instrument



### One System

Having one common software for all instruments brings a variety of advantages, including:

- Centralized management
- Less complexity
- Less training
- Fewer validation costs
- Data exchange
- Avoid transcription errors
- One single interface to other lab systems



### Maximum Security

LabX fully supports the current requirements of regulatory bodies. Security features such as electronic signatures and an Audit Trail makes your lab system audit-ready at any time.

- Audit Trail
- Electronic Signatures
- User Rights



## **Instruments**

Density Meters

Refractometers

UV/VIS Spectrophotometers

Titrators

Karl Fischer Titrators

pH Meters

Balances

Melting Point Devices

Automated Dosing Systems

Automated Sample Changers

# LabX Workflow Support

## Optimize Your Processes with LabX

**Daily routines both in the lab and in the office are greatly simplified thanks to the power of LabX. You can rest assured that SOPs are followed, processes are secure, and all the information you need is at your fingertips.**

Optimize your complete laboratory workflow with LabX – from sample data entry to measurements, reporting and data export or integrate it fully into your LIMS, LES or any other system. You can work at the instrument touchscreen, at the PC or both concurrently – whatever fits your needs best.

### Planning

**Have you thought about the analysis workflow? Do you have all the information and sample data ready?**

- Develop and implement SOP-compliant application methods, ready for use on the relevant instrument
- Define the rights of individual users and set-up the daily task list
- Prepare sample data and measurements in external systems (e.g. LIMS) and send the data to LabX

### Preparation

**Are your instruments and your sensors in the right condition for analysis? Are all tasks planned properly?**

- Set-up the daily task list and assign tasks to users
- Define analysis in external systems and send to LabX
- Automatic recognition of expired sensors and other equipment
- Automatic blocking of instruments outside of specifications
- Automatic tests, adjustments and calibrations of instruments and sensors

### Execution

**Are you using the appropriate SOP? Did you follow the SOP correctly? Did you choose the right instrument?**

- Create user-specific shortcuts
- Automatic check of correct instrument specifications
- Intuitive user guidance at the instrument touchscreen
- Fully automated multiparameter measurements



### Analysis & Data Management

**Are the results within specifications? Have you recalculated correctly? Do you have the complete data?**

- Real-time storage of all data and metadata
- Automated calculations
- Automated evaluation of results according to predefined specifications (out-of-spec results are highlighted)
- Forwarding of evaluated data to LIMS and other external systems

### Reporting & Archiving

**Have you recorded and compiled all data clearly and correctly?**

- Automated and centralized result documentation through LabX
- Possibility to view and review complete data and metadata at all times
- User-defined reports
- Network printing or report storage as customized file (e.g. pdf, xml, csv)

### Audit

**Is your system audit-ready at all times? Did you sign your work? Can you find all metadata in time?**

- Audit trail with customized search folders
- Single/double electronic signature processes
- Secure database
- Single database with all data and metadata of all connected instruments

# One System For Multiple Instruments

**With LabX as a single solution for METTLER TOLEDO lab instruments you can reduce complexity while improving processes and data quality in your lab. The benefits of such a system are efficient and safe data handling, high process security and full SOP user guidance at the instrument terminal without the need of a PC next to each instrument.**

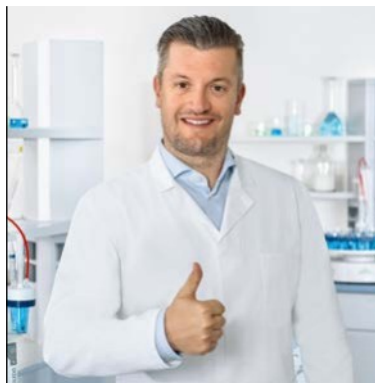
Once an SOP has been converted into a LabX workflow it will be available on each relevant device and guide the user automatically. All the collected measurement data, raw data and contextual metadata is stored automatically in the central database. Data can be exchanged safely. Manual data transfer is no longer necessary, thus eliminating potential transcription errors. With the ability to generate automatic reports, time-consuming administrative work is reduced to a minimum. The operator can concentrate on executing the actual analysis effectively, achieving the best possible results.



### Centralized Management

One software which is able to create one system with a variety of instruments allows you to manage everything:

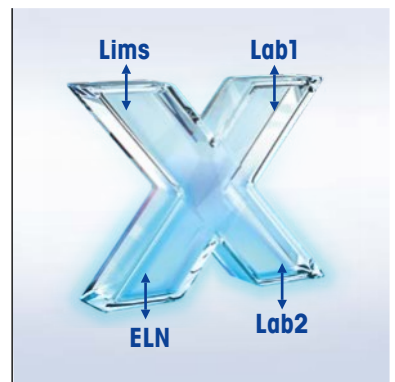
- Connected instruments
- Resources used in the system
- Workflows over various instruments
- Data and metadata generated in this system
- Users and user rights



### Many Advantages

Using one system reduces complexity and provides additional benefits:

- Less user training
- Interconnectivity
- Reduced validation efforts
- One interface to external systems



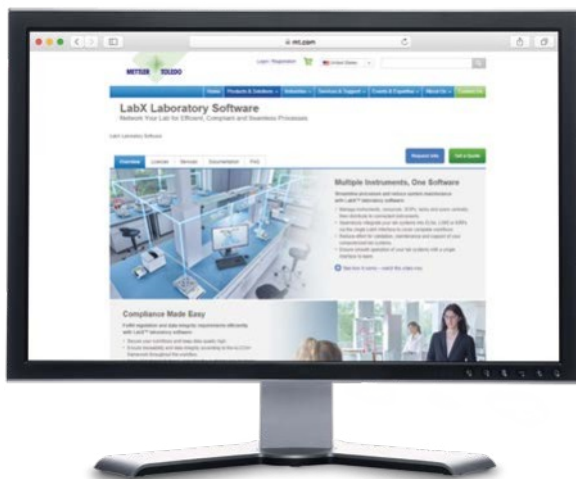
### Lean Integration

Much more than just data import and export. Save time and avoid transcription errors by integrating METTLER TOLEDO lab instruments to external systems such as ELN, LIMS, SAP and Excel with LabX.

- Exchange of csv or xml files
- Integrated API



“LabX makes your lab paperless and lean and provides maximum security.”



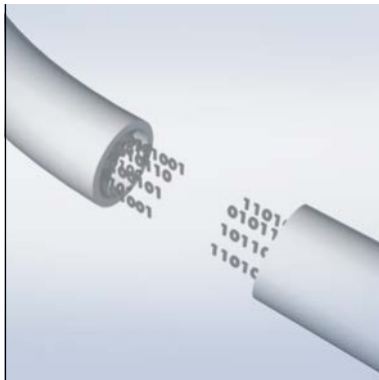
[www.mt.com/labx](http://www.mt.com/labx)

# Ensure System Security and Audit-Readiness at All Times

**To ensure the quality of the data generated in a laboratory, data integrity is key in current Good Manufacturing Practices (cGMP).**

**In the event of an inspection it must be ensured that all analytical data is accurate, complete and consistent.**

LabX has all the technical controls in place to support laboratories around the globe with regulatory compliance. The FDA ALCOA+ requirements for data integrity are fully supported. Keep your system secured with the LabX validation products and services offered by METTLER TOLEDO and be ready for an audit at any time.



### Data Integrity

All generated data and metadata such as date and time, user information and instrument status are safely stored in the central database. LabX tracks your data all the way from origin to storage.

- Covers all points of ALCOA and ALCOA+
- Centrally store complete data including metadata



### Regulatory Support

Built-in security features such as electronic signatures and user management options assist you in complying with regulations and ensure your lab is audit-ready at all times.

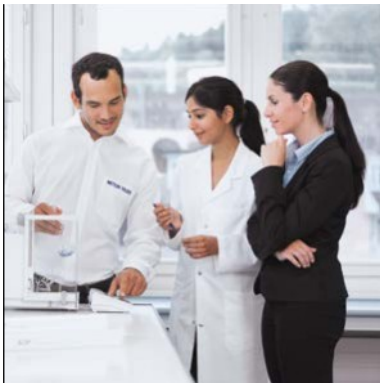
- Secure database, full traceability
- Audit Trail
- Management of instrument tests
- User rights
- Review/approve data



### Validation Support

Predefined validation manuals ensure validation of all critical aspects and assist with compliance procedures. The total cost of ownership is significantly reduced by validating one system for many instruments.

- Ready-to-use Validation Manuals
- Less total cost of ownership



### **Tailored Services**

Our trained and experienced technical specialists will support you in anything you require to keep your system compliant and running at peak performance.

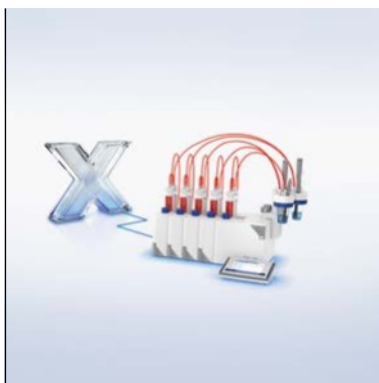
- Maintenance contracts
- Professional installation
- Validation service
- On site trainings
- Application development
- Support & maintenance

# Tailor LabX to Your Needs

## Start Small, Expand Later

**LabX is fully adaptable to meet your needs. Connect the instruments you want in a simple or a distributed system. A range of options allows you to choose extra functionalities to match your requirements.**

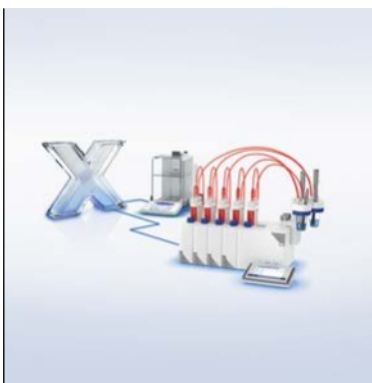
You can either install LabX on one PC or on one or several servers in a network. Connect one or several instruments to one LabX system and add extra functionalities as you need them.



### **Basic Installation**

Profit from extended functionalities in workflow guidance and data management for your instrument.

- Installed on one PC
- Connect up to 3 instruments



### **Expansion at Any Time**

Extend your LabX installation with extra options, such as user management or regulation support according to your needs.

- Extend the functionality with various options
- Connect up to 60 instruments



### **Full Network Solution**

Profit from full LabX functionality throughout your company network. Access all methods from several labs and collect data in a lean and secure way.

- Work in the office or in the lab
- Connect several labs to one LabX system



### Options

- User Management
- Import/Export
- Integration
- Statistical Evaluation
- Advanced Report Designer
- Regulation

# LabX Laboratory Software

## One System to Simplify Your Lab



## LabX

Power the Bench

Visit our website to see what LabX laboratory software can bring to your lab – on the lab bench and in the office

Explore the benefits of LabX

► [www.mt.com/labx](http://www.mt.com/labx)

[www.mt.com](http://www.mt.com)

For more information

### METTLER TOLEDO Group

Laboratory Division

Local contact: [www.mt.com/contacts](http://www.mt.com/contacts)



Subject to technical changes

© 03/2021 METTLER TOLEDO. All rights reserved

30427583A

Group MarCom RITM728002 LB/IK