

CaliberLIMS[®]

Laboratory Information Management System



Caliber

Deliver More. Deliver Excellence

Laboratory Challenges are Growing

The challenges that pharma companies face today are very different from what the industry faced a few years ago. Digitalization is no longer a luxury, it has become a necessity. In addition to the challenges hitherto of process non-compliances, human errors, and data integrity challenges, there is a new dimension of digitalization across the enterprise. LIMS is now a critical piece of the new industrial revolution. Pharma 4.0 implementation requires an advanced, intuitive LIMS that can communicate across platforms seamlessly and can supply data for advanced analytics and enterprise data integration.

Any LIMS today can help labs address issues in process adherence, data integrity risks, human errors, among other everyday challenges. However, we live in today's Volatile, Uncertain, Complex, and Ambiguous (VUCA) world, resilience is a priority. To build a resilient, tomorrow-ready lab, you need more from a LIMS. With more than 20 years of experience, expertise, and research, CaliberLIMS stands tall as a system you can rely on for not just today's needs, but also for tomorrow's complexities.

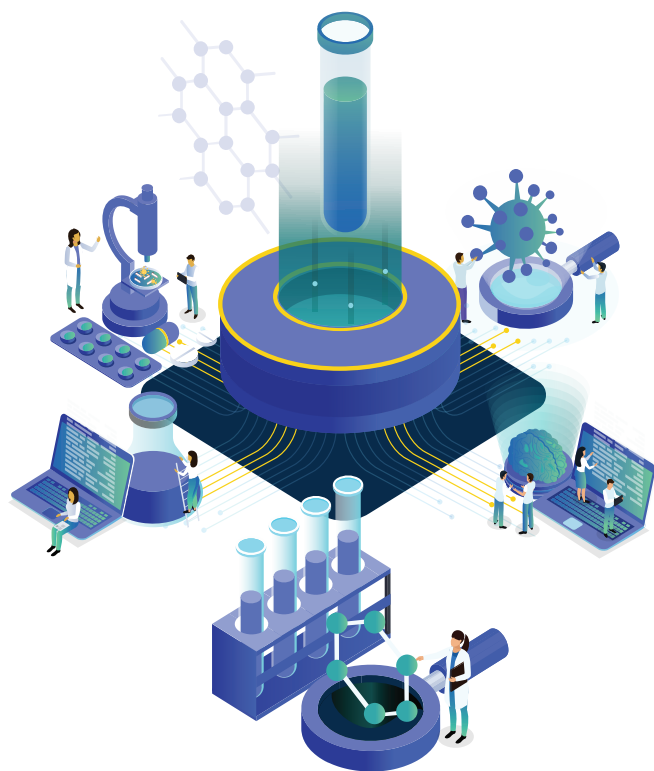
The Great Divide

Stand-alone tools such as ELN, LES, ERP, and SDMS digitalize the lab processes and collate data. However, the data collected from these tools don't interact with each other and hinder informed decision-making. As a result, the tools create data silos hampering the chance of increasing lab efficiency. There is a visible distance and divide created between the lab and its valuable data. This situation emphasizes the need for a robust LIMS platform that lets everything in the lab talk to each other effortlessly.

The Future of Labs

A smart lab enhances the efficiency of lab analysts, reviewers, and lab managers, by giving them complete freedom from repetitive tasks and manual intervention. A lab with connected systems, instruments, and other quality systems results in better operational efficiencies. With these integrations and its own deep functionality, CaliberLIMS sets a foundation for the future. Clean and robust data, systems that exchange information, and essential regulatory checks and balances – one system takes care of it all for you.

CaliberLIMS is your lab's best companion. It is built on the latest technology that supports your lab's internal and external operations and enhances lab efficiency with predictive analytics and insights. It is a secure, reliable, and fully compliant system that can be hosted on-premises, virtual, and on cloud. With comprehensive functionality, extensive modules, and high adherence to the latest global regulations, CaliberLIMS ensures a paperless laboratory. With comprehensive modules & features that assure regulatory compliance, your paperless lab dream can easily become a reality you will be proud of.



One LIMS for your Paperless Lab Needs

From small-scale individual lab deployments to advanced, global multi-site implementations, CaliberLIMS equips all that is necessary to establish a fully integrated paperless lab.

With 19+ robust modules, the CaliberLIMS efficiently manages integrated sample workflow, inventory management, stability studies, visual inspection and much more. These modules complement each other in the digitalization of the lab processes to allow organizations to manage their workflows with ease and efficiency. With CaliberLIMS, productivity, quality, and compliance are system-driven efforts without manual interference.



Your Paperless Strategy, Your Way

Caliber offers flexibility to companies on their path to a Paperless Lab. You can start with just a few necessary modules and scale up your LIMS by adding on more as per your need. Your paperless strategy is fully in your control. With CaliberLIMS, you can go all the way up to a 100% Paperless Lab – an opportunity that not all LIMS solutions offer.

Connect Everything – Achieve a Fully Integrated Lab



CaliberLIMS is an integrated LIMS platform that increases efficiency, streamlines production processes, and amplifies operations. Using the CaliberLIMS system with a bi-directional interface facility, Pharma companies can collect data directly into the system and mine it later.

Instrument Integration – Integrates with heterogeneous instruments with file-based or port-based output, and with multi-vendor CDS systems. Users can track end-to-end asset management along with instrument usage logs, instrument calibration schedules, consumable records, maintenance records etc., which speeds up analysis. Caliber's External Data Aggregation Processor Engine (EDAP) facilitates integration between the instruments and the LIMS in three different modes of data collection.

Port-Based Instruments - EDAP retrieves data conveniently from RS 232 port-based instruments.

File-Based Instruments - Any instrument generating results/reports in a file easily integrates with the application, and EDAP retrieves data in less time. It is a flawless experience.

CDS-Based Instruments - Seamless integration with Chromatography Data Server (CDS) can be unidirectional or bi-directional. The EDAP engine integrates well with high degree of compliance and convenience together and allows accurate data flow between the two applications, with complete traceability.

Other Lab Equipment - Seamless bi-directional interface for work list posting and transfer of results automatically from equipment. CaliberLIMS seamlessly integrates with equipment management software like LabX to boost efficiency.

ERP Integration - With some of the globally first integration certifications, CaliberLIMS easily integrates with SAP, Oracle, and any other ERP systems. Seamless integration ensures data for right from material receipt in the warehouse to material container management and certification along with appropriate label status management.

Identity Management - CaliberLIMS can be integrated for authentication with enterprise directory systems and can synchronize with the organization's identity management tools via LDAP/AD. This allows seamless access to the system and makes authentication policy implementation simpler.

Dynamic Integration Capabilities - Integrates with all internal and external applications through various protocols, users can leverage critical data across platforms and fine-tune lab, quality, and production processes.

Reporting & Statistics - CaliberLIMS connects to reporting engines to facilitate reporting, analytics, and statistics. This makes decision-making data-based and timely so as to manage potential issues.

Designed to Empower the Entire Value Chain



Lab Analyst

- Eliminate redundant and repetitive entries
- Reduce lab errors and ensure a better quality of testing
- Improve communication and quicker delivery
- Increase transparency



Reviewer

- Reduce redundancy with Review by Exception
- Review all data & documents on a single screen
- Easy compliance review
- Initiate corrective actions for deviations



Lab Manager

- Track the sample status and online approval
- Check inventory status using inventory modules
- Supervise and plan sample analysis
- Train lab technicians and assistants for equipment usage



Executive Decision Maker

- Retrieve in-built reports and organization-level analytics at any time
- Easily track OOS & OOT, deviations, and trends
- Get instant insights from visual dashboards
- Take effective decisions for process enhancement

Future Ready, Quality Ready

Compliance, Efficiency, and most importantly, Quality play a critical role in being future-ready. Compliance and efficiency are the expected results of digitalization. However, building a quality culture requires well-informed decision-making based on data, trends, and statistics.

There is a steady push for quality from regulators. The industry is looking to move beyond compliance and evolve to prioritize building a quality culture across the entire ecosystem, including regulators. Regulators like FDA are looking to shift to performance-based regulation and propose to set up metric-based surveillance.

Quality Metrics Ready

Intrinsic quality is the favored target to achieve. It is becoming more essential to continually recognize, improve, and solve problems and not just adhere to regulatory expectations. Quality data from LIMS plays a key role in arriving at crucial Quality Metrics. CaliberLIMS offers ready plugins for all key statistical parameters with a specially designed Stats Pack with comprehensive statistics like Process Capability Analysis, Cp and Cpk, PPM, Process Performance Index (PPK), Box Cox Transformation, and Shelf life Prediction for Stability Data.

CaliberLIMS also offers key web services to push critical lab data seamlessly to APQR and CPV applications on the fly.

A Value-Added LIMS for Operational Excellence



Regulatory Compliance

CaliberLIMS adheres to the compliance norms laid in 21 CFR Part 11, 211 & 118, Annexure 11, GXP, NABL, ALCOA plus, and many such regulatory requirements



Secure, Reliable & Integrated Solution

A web-based, robust, stable, reliable, and scalable solution, CaliberLIMS simplifies laboratory workflow tasks from sample login to COA generation with traceable authenticity.



Host it Anywhere Architecture

CaliberLIMS can be hosted anywhere. It is easy to operate the system with all its features from any authorized system within the intranet and internet.



Reporting Engine

CaliberLIMS allows quick decision-making by generating trends, charts, and reports on the fly using the accumulated data with the help of the Caliber Reporting engine.



Availability of FAIR Data

CaliberLIMS makes Findable, Accessible, Interoperable, and Replicable (FAIR) data available, which in turn assists in ensuring data security and data integrity.



Implementation Strategy

CaliberLIMS can be implemented using our comprehensive pre-validated system. This cuts down implementation time while being compliant.



Configurable Workflow Automation

Configurable workflow automation significantly reduces future validation efforts and facilitates smooth operations with immense savings in time and costs.



Seamless Integration

CaliberLIMS seamlessly integrates with file-based, port-based, CDS instruments, lab equipment, lab systems, and other enterprise systems such as ERP, SAP, Oracle, etc.



Avoid 483s

The functionality of CaliberLIMS is made with compliance, security, and most importantly, data integrity in mind. The system is designed to keep you audit-ready at all times.



Audit Trails

CaliberLIMS application includes detailed audit trails which makes it easier to furnish any information during audits.



Scalability

CaliberLIMS is easily configurable and scalable. Companies can approach stage-wise implementation for a cost-efficient digitalization roadmap.



Robust Modules

CaliberLIMS comes with extensive modules and functionalities that take efficiency, quality, and compliance to another level.



Integrated Quality Management with Caliber

Talk to our team to know more about our product suite



Automation | Compliance | Quality

sales@caliberuniversal.com
www.caliberuniversal.com

United States | Europe | China | UAE | India
Singapore | Indonesia | Malaysia | Bangladesh | Sri Lanka | Philippines



LEADING
TRANSFORMATION
SINCE 2001